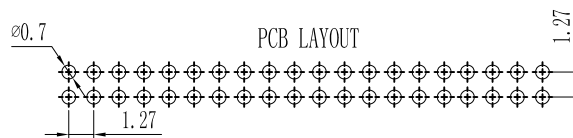
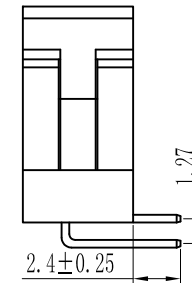
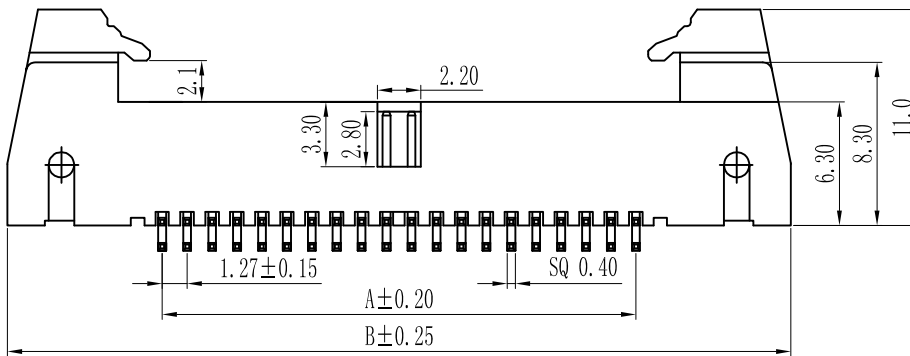
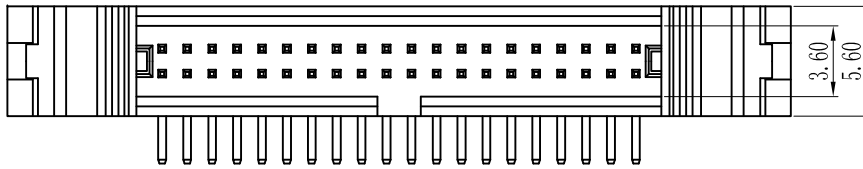


ROHS

For reference only

Pin数	尺寸A	尺寸B
2×6	6.35	22.12
2×8	8.89	24.66
2×10	11.43	27.20
2×12	13.97	29.74
2×14	16.51	32.28
2×16	19.05	34.82
2×18	21.59	37.36
2×20	24.13	39.90
2×22	26.67	42.44
2×24	29.21	44.98
2×26	31.75	47.52
2×28	34.29	50.06
2×30	36.83	52.60
2×32	39.37	55.14
2×34	41.91	57.68
2×36	44.45	60.22
2×38	46.99	62.76
2×40	49.53	65.30
2×42	52.07	67.84
2×44	54.61	70.38
2×46	57.15	72.92
2×48	59.69	75.46
2×50	62.23	78.00
2×52	64.77	80.54
2×54	67.31	83.08
2×56	69.85	85.62
2×58	72.39	88.16
2×60	74.93	90.70



Specification:

Current Rating : 1AMP

Temperature Range : -40℃to+105℃

Contact Resistance : 20mΩ Max

Insulation Resistance : 1000MΩ Min

Withstanding Voltage : AC 500V

Material:

Insulator : Polyester (UL94V-0)

Standard:PBT/PA6T/LCP

Contact: Brass

Plating : Au or Sn Over 50u" Ni

REV.	REVISION RECORD	DATE	UNIT: MM SIZE: A4	GENERAL TOLERANCES		SCALE: 1:1	NAME	DATE	深圳市联索连接器有限公司 SHENZHEN UNICABLE CONNECTOR CO., LTD. 公司网址WWW.SZLSTC.CN 公司邮箱SZLSTC@126.COM 公司电话0755-23765650 公司传真0755-23765753	PART. NO:		
				LINEAR	ANGLES					LSEH-0003		
				0.00±0.15	X° ±3°					DWG. NO: ENDE3003		
				0.000±0.08	X° X'±2°				TITLE: Pitch1.27mm Ejector Header, Dual Row, Plastic Height 6.3mm, Right Angle Type		REV: A0	SHEET: 1/1