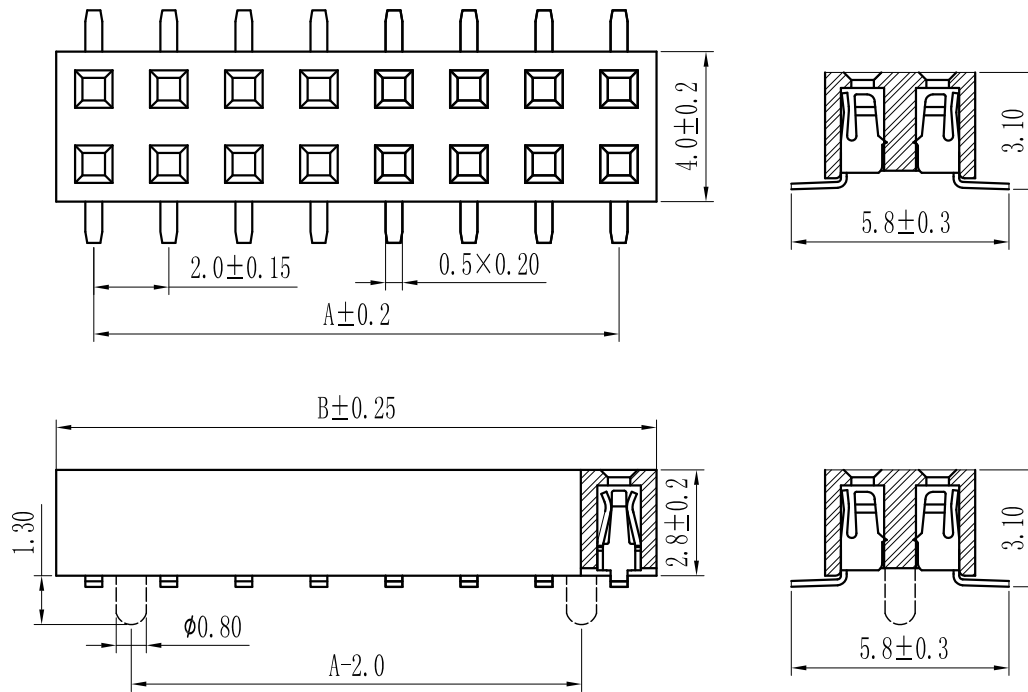


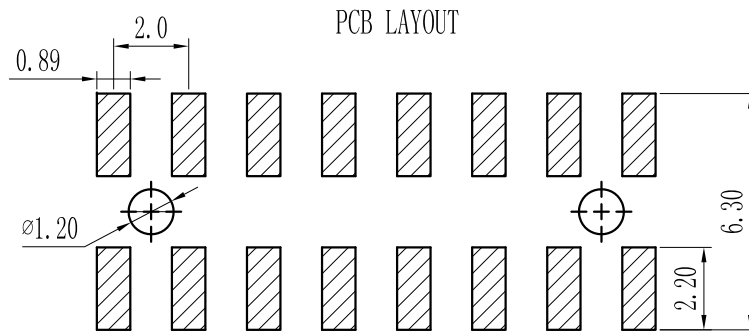
ROHS

For reference only

Pin数	尺寸A	尺寸B
2×3	4.0	6.0
2×4	6.0	8.0
2×5	8.0	10.0
2×6	10.0	12.0
2×7	12.0	14.0
2×8	14.0	16.0
2×9	16.0	18.0
2×10	18.0	20.0
2×11	20.0	22.0
2×12	22.0	24.0
2×13	24.0	26.0
2×14	26.0	28.0
2×15	28.0	30.0
2×16	30.0	32.0
2×17	32.0	34.0
2×18	34.0	36.0
2×19	36.0	38.0
2×20	38.0	40.0
2×21	40.0	42.0
2×22	42.0	44.0
2×23	44.0	46.0
2×24	46.0	48.0
2×25	48.0	50.0
2×26	50.0	52.0
2×27	52.0	54.0
2×28	54.0	56.0
2×29	56.0	58.0
2×30	58.0	60.0
2×31	60.0	62.0
2×32	62.0	64.0
2×33	64.0	66.0
2×34	66.0	68.0
2×35	68.0	70.0
2×36	70.0	72.0
2×37	72.0	74.0
2×38	74.0	76.0
2×39	76.0	78.0
2×40	78.0	80.0



Specification:
 Current Rating : 1.5AMP
 Temperature Range : -40°C to $+105^{\circ}\text{C}$
 Contact Resistance : $20\text{m}\Omega$ Max
 Insulation Resistance : $1000\text{M}\Omega$ Min
 Withstanding Voltage : AC 500V
 Material:
 Insulator : Polyester (UL94V-0)
 Standard: PA6T/LCP
 Contact: Bronze
 Plating : Au or Sn Over $50\mu\text{Ni}$



REV.	REVISION RECORD	DATE	UNIT: MM	GENERAL TOLERANCES		SCALE: 1:1	NAME	DATE	深圳市联索连接器有限公司 SHENZHEN UNICABLE CONNECTOR CO., LTD. 公司网址WWW.SZLSTC.CN 公司电话0755-23765650 公司邮箱SZLSTC@126.COM 公司传真0755-23765753	PART. NO:	
				LINEAR	ANGLES					LSFH-0070	
				0.00 ± 0.15	$X^{\circ} \text{ REF} \pm 6^{\circ}$	APPROVED				DWG. NO:	
				0.00 ± 0.15	$X^{\circ} \pm 3^{\circ}$	DESIGNER			TITLE: Pitch 2.0mm Female Header, Dual Row, Plastic Height 2.8mm, SMT (with Local Peg) Type(U)		
			SIZE: A4	0.000 ± 0.08	$X^{\circ} X' \pm 2^{\circ}$	DRAWN			REV: A0	SHEET: 1/1	