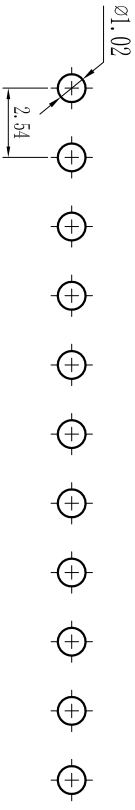
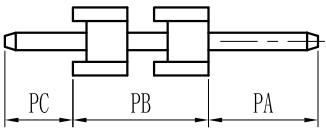
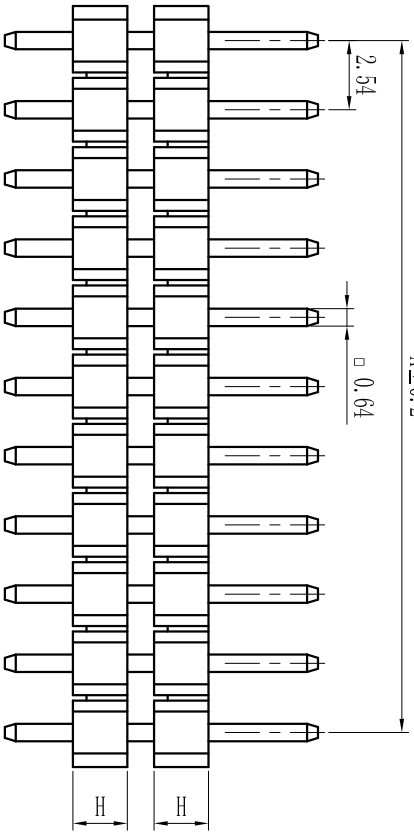
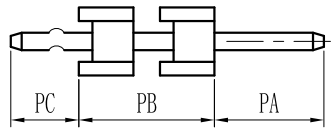
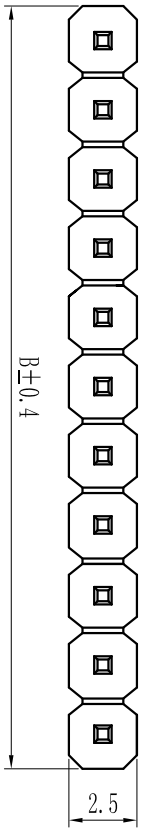


ROHS

For reference only

Pin#	尺寸A	尺寸B
1X1	-	2.54
1X2	2.54	5.08
1X3	5.08	7.62
1X4	7.62	10.16
1X5	10.16	12.70
1X6	12.70	15.24
1X7	15.24	17.78
1X8	17.78	20.32
1X9	20.32	22.86
1X10	22.86	25.40
1X11	25.40	27.94
1X12	27.94	30.48
1X13	30.48	33.02
1X14	33.02	35.56
1X15	35.56	38.10
1X16	38.10	40.64
1X17	40.64	43.18
1X18	43.18	45.72
1X19	45.72	48.26
1X20	48.26	50.80
1X21	50.80	53.34
1X22	53.34	55.88
1X23	55.88	58.42
1X24	58.42	60.96
1X25	60.96	63.50
1X26	63.50	66.04
1X27	66.04	68.58
1X28	68.58	71.12
1X29	71.12	73.66
1X30	73.66	76.20
1X31	76.20	78.74
1X32	78.74	81.28
1X33	81.28	83.82
1X34	83.82	86.36
1X35	86.36	88.90
1X36	88.90	91.44
1X37	91.44	93.98
1X38	93.98	96.52
1X39	96.52	99.06
1X40	99.06	101.60



PCB LAYOUT

Specification:
 Current Rating : 3.0AMP
 Temperature Range : -40°C to +105°C
 Contact Resistance : 20mΩ Max
 Insulation Resistance : 1000MΩ Min
 Withstanding Voltage : AC 1000V
 Material:
 Insulator : Polyester (UL94V-0)
 Standard: PBT/PA6T/ICP

Contact: Brass
 Plating : Au or Sn Over 50u" Ni

Height
H=1.0mm, 1.5mm, 1.7mm, 2.0mm, 2.5mm, 3.3mm

GENERAL TOLERANCES		SCALE:		NAME		DATE	
LINEAR	ANGLES	1:1					
0.0±0.25	X° REF±6°	APPROVED					
UNIT: MM	X° ±3°	DESIGNER					
SIZE: A4	X° X'±2°	DRAWN					
REV.	REVISION RECORD	DATE	SIZE: A4	0.000±0.08			
1							
2							
3							
4							
5							
6							
7							
8							

深圳市联合连接器有限公司
SHENZHEN UNIFORMABLE CONNECTOR CO., LTD.
 公司地址: SZ15126.COM
 公司电话: 0755-23765650
 公司传真: 0755-23765753

TITLE:
 Pitch2.54mm Pin Header, Dual Plastic,
 Single Row, DIP

PART. NO:
 LSPH-0088

DRG. NO:
 ENDE0088

REV: A0 SHEET: 1/1