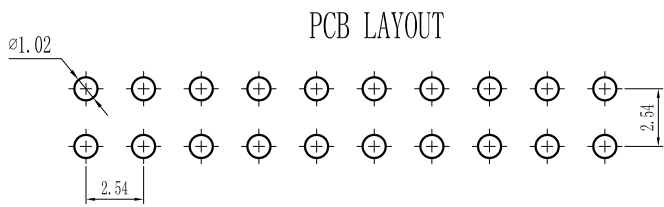
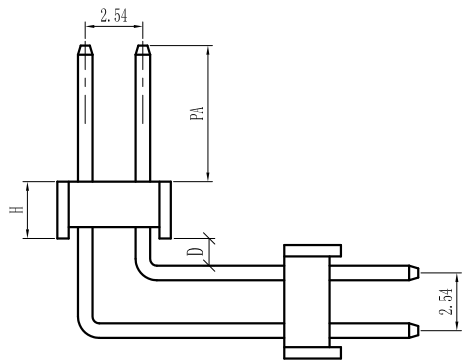
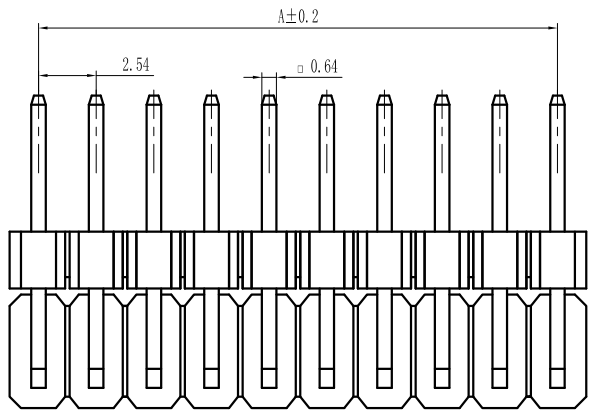
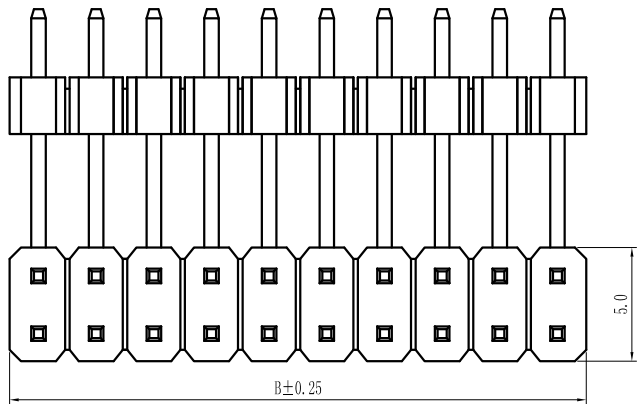


ROHS

For reference only

Pin数	尺寸A	尺寸B
2×1	-	2.54
2×2	2.54	5.08
2×3	5.08	7.62
2×4	7.62	10.16
2×5	10.16	12.70
2×6	12.70	15.24
2×7	15.24	17.78
2×8	17.78	20.32
2×9	20.32	22.86
2×10	22.86	25.40
2×11	25.40	27.94
2×12	27.94	30.48
2×13	30.48	33.02
2×14	33.02	35.56
2×15	35.56	38.10
2×16	38.10	40.64
2×17	40.64	43.18
2×18	43.18	45.72
2×19	45.72	48.26
2×20	48.26	50.80
2×21	50.80	53.34
2×22	53.34	55.88
2×23	55.88	58.42
2×24	58.42	60.96
2×25	60.96	63.50
2×26	63.50	66.04
2×27	66.04	68.58
2×28	68.58	71.12
2×29	71.12	73.66
2×30	73.66	76.20
2×31	76.20	78.74
2×32	78.74	81.28
2×33	81.28	83.82
2×34	83.82	86.36
2×35	86.36	88.90
2×36	88.90	91.44
2×37	91.44	93.98
2×38	93.98	96.52
2×39	96.52	99.06
2×40	99.06	101.60



Specification:
 Current Rating : 3.0AMP
 Temperature Range : -40°Cto+105°C
 Contact Resistance : 20mΩ Max
 Insulation Resistance : 1000MΩ Min
 Withstanding Voltage : AC 1000V
 Material:
 Insulator : Polyester (UL94V-0)
 Standard:PBT/PA6T/LCP
 Contact: Brass
 Plating : Au or Sn Over 50u" Ni

Height
H=1.0mm、1.5mm、1.7mm、2.0mm、2.5mm、3.3mm

REV.	REVISION RECORD	DATE	UNIT: MM	GENERAL TOLERANCES		SCALE: 1:1	NAME	DATE	深圳市联索连接器有限公司 SHENZHEN UNICABLE CONNECTOR CO., LTD. 公司网址WWW.SZLSTC.CN 公司电话0755-23765650 公司邮箱SZLSTC@126.COM 公司传真0755-23765753	PART. NO: LSPH-0102	
				0.0±0.25	X° REF±6°					APPROVED	DWG. NO: ENDE0102
				0.00±0.15	X° ±3°					DESIGNER	
				0.000±0.08	X° X'±2°					DRAWN	
REV.		REVISION RECORD		DATE	UNIT: MM	SIZE: A4	TITLE: Pitch2.54mm Pin Header, Dual Plastic, Dual Row, Right Angle Type		REV: A0	SHEET: 1/1	